

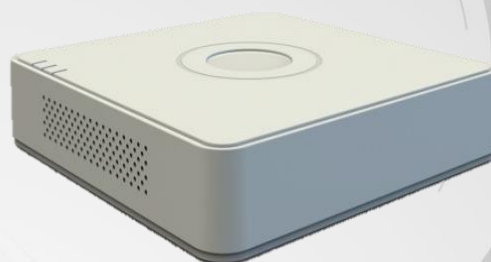
DS-7100HGHI-F1 TURBO HD DVR

Available Models

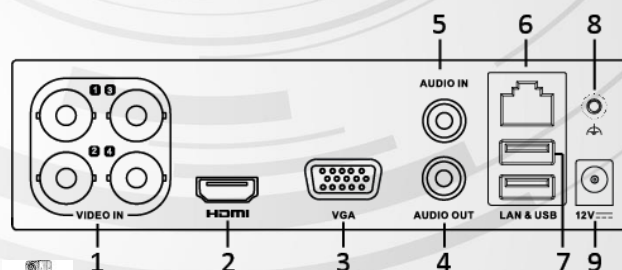
DS-7104HGHI-F1, DS-7108HGHI-F1, DS-7116HGHI-F1.

Key Features

- Connectable to HD-TVI, AHD, network and analog cameras;
- Support HIKVISION-C protocol for connecting camera over coax;
- Simultaneous HDMI and VGA outputs at up to 1080p resolution.
- New GUI and support starting record with one key;
- Instant playback for assigned camera during multi-channel live view mode;
- 4/8/16-ch synchronous playback at 720p resolution; and reverse playback for multi-camera;
- Smart playback to go through less effective information;
- Manual video quality diagnostics;
- Customization of tags, searching and playing back by tags;
- Locking and unlocking record files;
- Support HDD quota management; different capacity can be assigned to different cameras under quota mode;
- Provide 1 SATA interface for HDD with up to 6TB capacity;
- Up to 1 self-adaptive 10M/100M network interface.
- Support Hikvision DDNS (Dynamic Domain Name System);
- Network detection function;
- Support 3G dongle E173.



Physical Interfaces



NOTE The rear panel of DS-7108HGHI-F1/DS-7116HGHI-F1 provides 8/16 video input interfaces.

| Index | Name |
|-------|--------------------------|
| 1 | VIDEO IN |
| 2 | HDMI Interface |
| 3 | VGA Interface |
| 4 | AUDIO OUT, RCA Connector |
| 5 | AUDIO IN, RCA Connector |
| 6 | LAN Network Interface |
| 7 | USB Ports |
| 8 | GND |
| 9 | 12VDC Power Input |



DS-7100HGHI-F1 TURBO HD DVR



Specifications

| Model | | DS-7104HGHI-F1 | DS-7108HGHI-F1 | DS-7116HGHI-F1 |
|--------------------|----------------------------------|--|--------------------------------------|---|
| Video/Audio input | Video input | 4-ch | 8-ch | 16-ch |
| | | BNC interface (1.0Vp-p, 75 Ω) | | |
| | Supported HDTV input | 720p/25Hz, 720p/30Hz | | |
| | Supported AHD input | 720p/25Hz, 720p/30Hz, CVBS | | |
| | IP video input | 1-ch up to 720P resolution | 2-ch 2-ch, up to 1080P resolution | |
| | Audio input/ Two-way audio input | 1-ch , RCA (2.0 Vp-p, 1 KΩ) | | |
| Video/Audio output | HDMI/VGA output | 1-ch, 1920 × 1080/60Hz, 1280 × 1024/60Hz, 1280 × 720/60Hz, 1024 × 768/60Hz | | |
| | Audio output | 1-ch, RCA (Linear, 1 KΩ) | | |
| Network management | Remote connections | 32 | 128 | 128 |
| | Network protocols | TCP/IP, PPPoE, DHCP, EZVIZ Cloud P2P, DNS, DDNS, NTP, SADP, SMTP, SNMP, NFS, iSCSI, UPnP™, HTTPS, 3G | | |
| Encoding | Video compression standard | H.264 | | |
| | Encoding resolution | 720p/WD1/4CIF/VGA/CIF | | |
| | Frame rate | 1/16 fps, real time frame rate | | |
| | Video bitrate | 32 Kbps to 4 Mbps | | |
| | Stream type | Video & Audio/Video | | |
| | Dual-stream | Support. Sub-stream resolution: CIF/QVGA/QCIF (real time) | | |
| | Audio compression standard | G.711u | | |
| | Audio bitrate | 64 Kbps | | |
| | Synchronous playback | 4-ch | 8-ch | 16-ch |
| Hard disk | Type | 1 | | |
| | Capacity | Up to 6 TB capacity for each disk | | |
| External interface | Network interface | 1; RJ-45 10M/100M self-adaptive Ethernet interface | | |
| | USB interface | Rear panel: 2 × USB 2.0 | | |
| General | Power supply | 12 VDC | | |
| | Consumption (without hard disks) | ≤ 8W | ≤ 12W | ≤ 20W |
| | Working temperature | -10°C to +55°C (14°F to 131°F) | | |
| | Working humidity | 10% to 90% | | |
| | Dimensions (W × D × H) | 200 × 200 × 45mm (7.9 × 7.9 × 1.8 inch) | | 285 × 210 × 45 mm (11.2 × 8.3 × 1.8 inch) |
| | Weight (without hard disks) | ≤ 0.8 kg (1.8 lb) | | ≤ 1.2 kg (2.6 lb) |